

VILLAGE OF THREE OAKS 2020 STREET RESURFACING OVERALL MAP



Division 1:
Cherry St
between Walnut and Buckeye

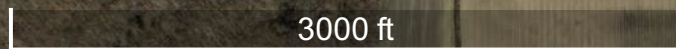
Division 4:
Sycamore St
between Hickory and Chamberlain

Division 5:
Hickory St
between Sycamore and Maple

Division 6:
Central Ave
between Elm and DPW Bldg

Division 2:
Michigan St
between Cedar and Tulip

Division 3:
Tulip Dr
between Paw Paw to dead end



CHERRY ST BETWEEN WALNUT ST AND BUCKEYE ST

WALNUT ST

CHERRY ST

BUCKEYE ST




LEGEND

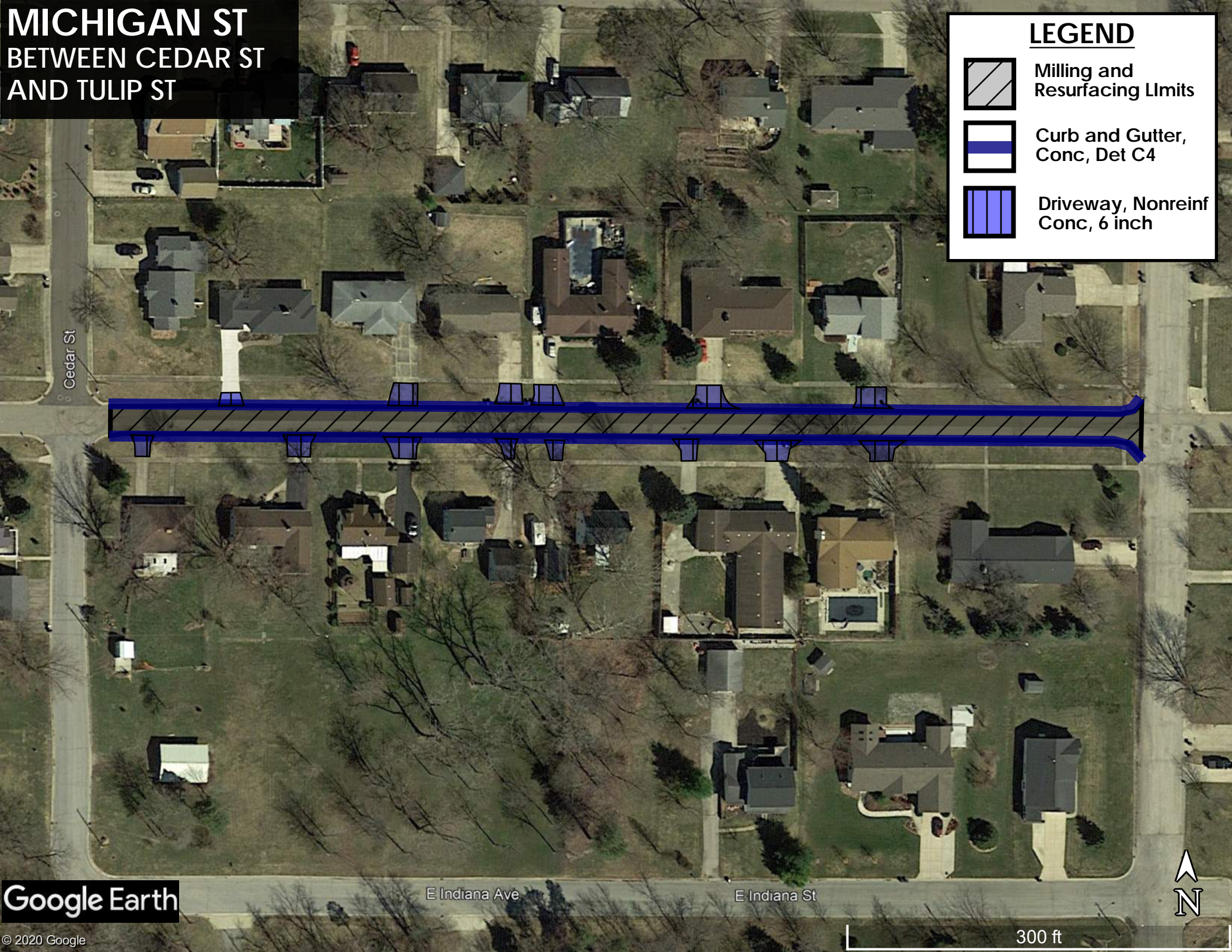
-  Milling and Resurfacing Limits
-  Curb and Gutter, Conc, Det C4
-  Driveway, Nonreinf Conc, 6 inch



MICHIGAN ST BETWEEN CEDAR ST AND TULIP ST

LEGEND

-  Milling and Resurfacing Limits
-  Curb and Gutter, Conc, Det C4
-  Driveway, Nonreinf Conc, 6 inch



Cedar St

E Indiana Ave

E Indiana St



Central Ave BETWEEN N. Elm and DPW Bldg

LEGEND

-  Milling and Resurfacing Limits
-  Paving Existing Gravel Road



HICKORY ST BETWEEN MAPLE ST AND SYCAMORE ST

LEGEND



Milling and Resurfacing Limits



Curb and Gutter, Conc, Det C4

Sycamore St E




5 Ft Curb Replacement

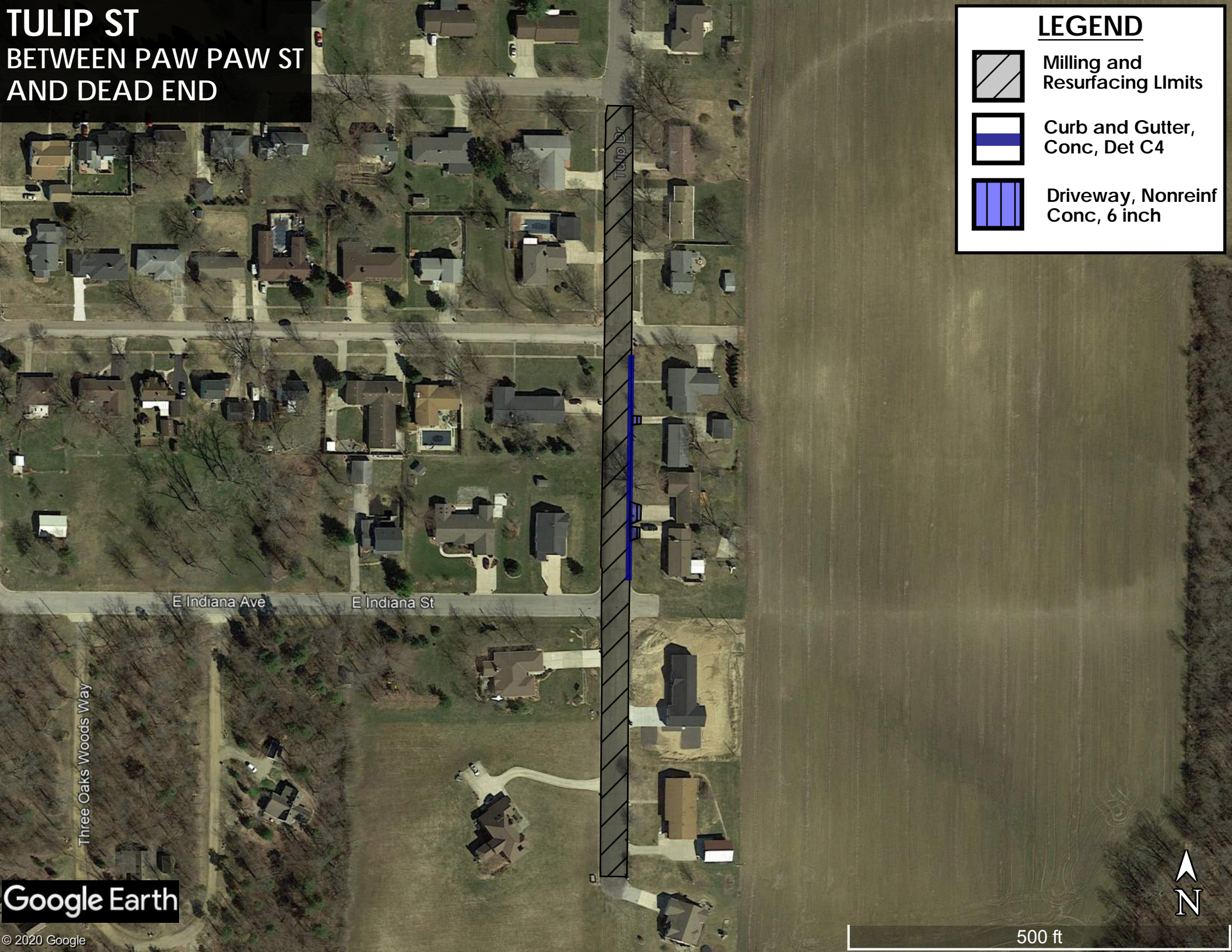
Maple St



TULIP ST BETWEEN PAW PAW ST AND DEAD END

LEGEND

-  Milling and Resurfacing Limits
-  Curb and Gutter, Conc, Det C4
-  Driveway, Nonreinf Conc, 6 inch



E Indiana Ave

E Indiana St

Tulip Dr

Three Oaks Woods Way

Google Earth



© 2020 Google



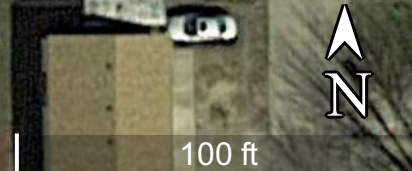
500 ft

SYCAMORE ST BETWEEN HICKORY ST AND CHAMBERLAIN ST

LEGEND

-  Milling and Resurfacing Limits
-  Curb and Gutter, Conc, Det C4

20 Ft Curb Replacement



A north arrow pointing upwards and a scale bar labeled '100 ft' are located in the bottom right corner of the image.